

SOUL

SmartTutor User Guide
(Version 3.2 – October 2006)



This user guide is produced and distributed by the e-Learning Support Team, ITS. It acts as an instructional handbook and guideline for learners to utilize SmartTutor (Release version 2.6.1a, Build: 0158) on self-learning through SOUL System. Suggestions on improving this user guide are welcomed.

Correspondence Address:

e-Learning Support Team, ITS
HKU School of Professional and Continuing Education
7/F., T. T. Tsui Building
HKU, Pokfulam Road,
Hong Kong.

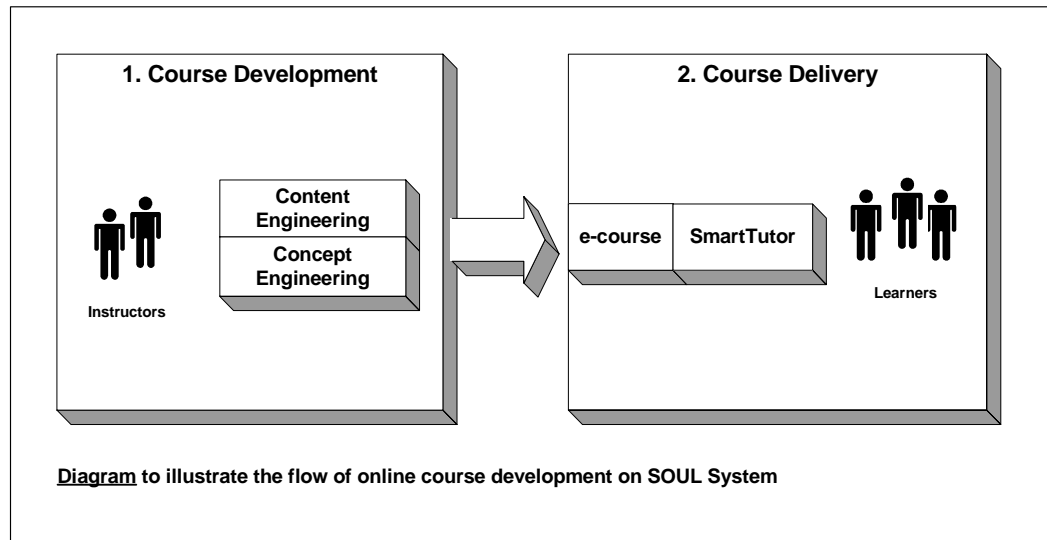
Fax : 2857 4437
Web site : <http://hkuspace.hku.hk/soul>

Table of Contents

1. INTRODUCTION	4
1.1 OVERVIEW.....	4
2. GETTING STARTED.....	5
2.1 SMARTTUTOR – ONLINE MODE	5
2.2 LANGUAGE AVAILABLE.....	5
2.3 FREQUENTLY ASKED QUESTIONS.....	6
2.4 ABOUT THIS LEARNING TOOL	6
3. LEARNING ENVIRONMENT	8
3.1 INTRODUCTION.....	8
3.2 NAVIGATION MENU.....	8
3.3 ICON INDICATION.....	9
4. WALKTHRU MODE	10
4.1 INTRODUCTION.....	10
4.2 REVISION TEST.....	10
5. CUSTOM MODE	14
5.1 INTRODUCTION.....	14
5.2 CUSTOMISED LEARNING PATH.....	14
5.3 PERSONALISED LEARNING PATH	16
6. REVIEW MODE	20
6.1 INTRODUCTION.....	20
6.2 REVIEW TEST	20
7. FEEDBACK.....	25
8. CONTACT US.....	25

1. INTRODUCTION

1.1 Overview



SmartTutor, is a Web-based self-learning tool, being one of the major components in SOUL System. It simulates the work of a human-like private tutor. It guides learners to complete their courses on their own performance and learning profile. Individual learning progress and performance are tracked and analysed to provide personalised study advice as well as learning path to achieve efficient learning.

SmartTutor provides three modes of learning, namely Walkthru Mode, Custom Mode and Review Mode. Learners can choose the most suitable one to meet their own needs. They can also switch among the three learning modes at any learning stage.

2. GETTING STARTED

2.1 SmartTutor – Online Mode

Learners can access the online courses through the SmartTutor after login to their SOUL account. Under **My Course** section on learners' welcome screen, courses that have been enrolled by learners are listed out. On clicking the course name, the online course main screen is shown, displaying the corresponding list of contents of that course.



2.2 Language Available

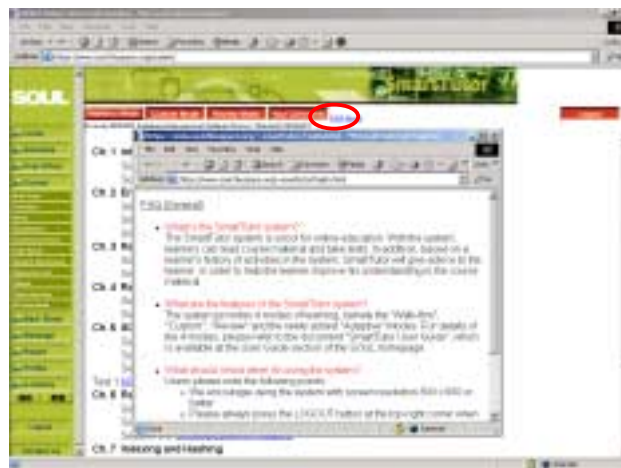
In SmartTutor, three different language user interfaces are available. They are English, Traditional Chinese and Simplified Chinese. Learners can switch among the 3 languages by clicking on the language icons **ENG**, **繁體** or **简体**.

SmartTutor on SOUL System (Online Mode)



2.3 Frequently Asked Questions

Online help such as **Frequently Asked Questions (FAQ)** is available when learners click on the “**FAQ**” link displayed on the top of the screen. For any inquiries about using SmartTutor, please feel free to send us email by clicking on the “**Contact Us**” button on the left navigation menu.



2.4 About this Learning Tool

On clicking the “**About**” link on the top of the screen, the information of SmartTutor is shown. Press the **OK** button to close the information dialog box.



3. LEARNING ENVIRONMENT

3.1 Introduction

In SmartTutor, three modes of learning are available and each of them is designed to meet the needs of individual learners.

- Walkthru Mode—provides a complete and default learning path;
- Custom Mode---assists learners in achieving efficient and target-oriented learning and provides a personalised learning path based on learner's learning profile;
- Review Mode---helps learners on examination preparation with guided revisions.

3.2 Navigation Menu

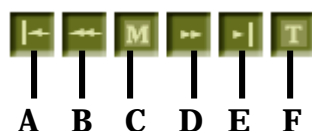
On the top of the online course main screen, Learning Mode menu is shown. Learners can select the learning mode they want to use.

To the right of the menu, a **Logout** button is shown for learners to log out SmartTutor.

Learning Mode menu.



On entering a learning session, Learning Session toolbar is shown on the top of the screen. By using the tools on the Learning Session toolbar, learners can navigate within the course content.

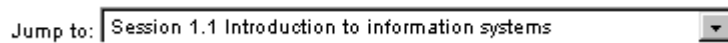


Learning Session toolbar. To see the tip for the tool, pause the cursor over a tool or button.

- A** Go back to previous learning session.
- B** Go back to previous page within the current learning session.
- C** Go to the main page of the corresponding learning mode that the learner has selected.
- D** Go to the next page within the current learning session.
- E** Go to the next learning session.
- F** Attempt a test on the current learning session / chapter.




Apart from using the toolbar, learners can also go to different learning sessions by using the pulldown menu in the top right hand corner.



3.3 Icon Indication

Icons are used to indicate the activities of the learners in each learning session.

The following icons are used:

-  The learner accessed the course materials in that session.
- The learner attempted test(s) in that session and the performance was good. (Blue tick)
- The learner attempted test(s) in that session and the performance was fairly good. (Orange tick)
- The learner attempted test(s) in that session and the performance was not good.



4. WALKTHRU MODE

4.1 Introduction

With Walkthru Mode, learners are provided with pre-defined learning path. Learning sessions are arranged in a specific order; learners will go through them one by one to build up their knowledge in that learning domain.

In SmartTutor, Walkthru mode is the default mode of learning.




On clicking the title of the first learning session, content of that learning session will be shown. By using the Learning Session toolbar mentioned in Section 3.2, learners can start the self-learning.

4.2 Revision Test

Revision tests are used to assess the learning progress of individual learners. On completion of a revision test, SmartTutor will provide with a summary of the learner's performance, question review and personalised advice to improve their learning profile.

To start a revision test for a learning session / chapter:

1. On Revision test screen, click on the  button on the Learning Session toolbar.
2. The screen with multiple-choice questions for the revision test is shown.
3. Answer the questions by selecting the correct answer.
4. Press the **Submit answers** button at the bottom of the screen.

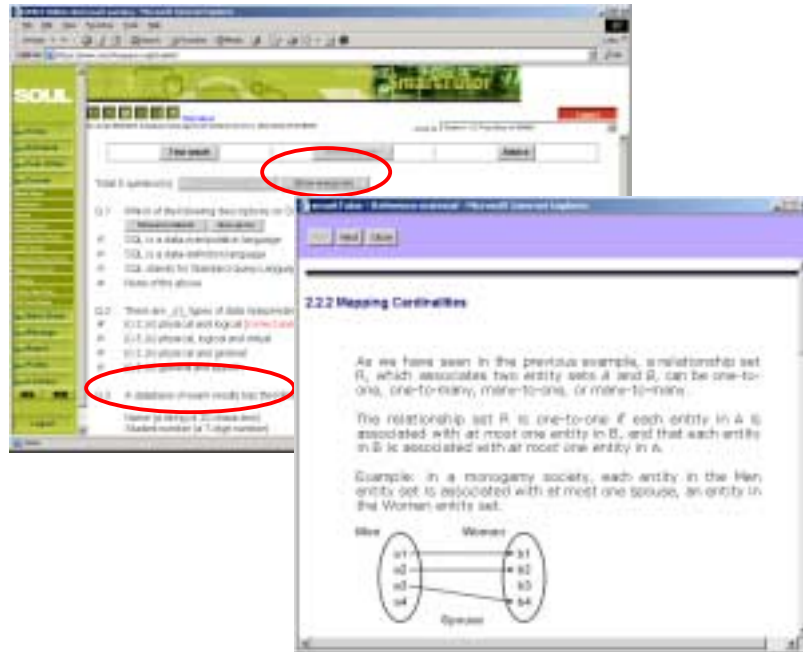


5. The results of the revision test are shown.



To review the revision test:

1. On the revision test result screen, press the **Review paper** button.
2. The questions and their corresponding correct answers in the revision test are shown.

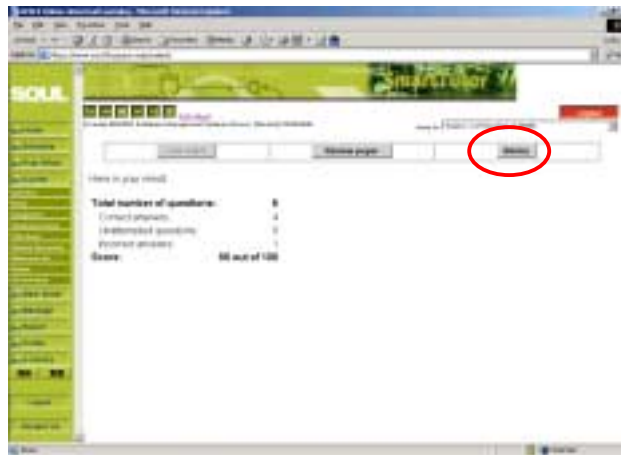


3. To view the incorrectly answered question(s), press the **Show wrong only** button.
4. Incorrectly answered questions are provided with **Reference material** and **More advice** options to allow learners to view the reference materials (which are shown on a pop-up window) and advice on that question (explanation of answer, prerequisite of that learning session etc).



To view the overall advice on that learning session / chapter:

1. On the revision test result screen, press the **Advice** button.



2. Following information is provided:
 - a. Overall performance of that test
 - b. Suggestion on the less proficient areas in the learning domain
 - c. Performance categorized by concepts (showing the number of questions from each concept in the revision test and how many were correctly answered)
 - d. Prerequisite of that learning session



5. CUSTOM MODE

5.1 Introduction

With Custom Mode, learners are provided with a higher flexibility of learning. Learners can define their target learning sessions and SmartTutor will suggest with a customised learning path based on the learning session(s) selected and the corresponding prerequisites. Therefore, learners will not miss out any fundamental session(s) for those target learning session(s) selected.

Besides, learners can test their profile by answering a set of questions (pre-test) related to the learning topics. Analysing the pre-test results, SmartTutor will provide each learner with a personalised learning path. With this learning mode, learners are identified with their less proficient areas and can focus on improving and strengthening those areas.



5.2 Customised Learning Path

To generate a customised learning path:

1. On the online course main screen, click on the **Custom Mode** button on the Learning Mode menu.
2. Click on the “**Custom learning path**” link.
3. List of contents with checkbox for selection is shown.



4. Select the target learning session(s) to be studied.
5. Press the **Submit choices** button.
6. Based on the learning sessions selected, a customised learning path is shown.
7. Press the **Confirm learning path** button to continue. Or press the **Back to Selection** button to change the selection of learning session(s).



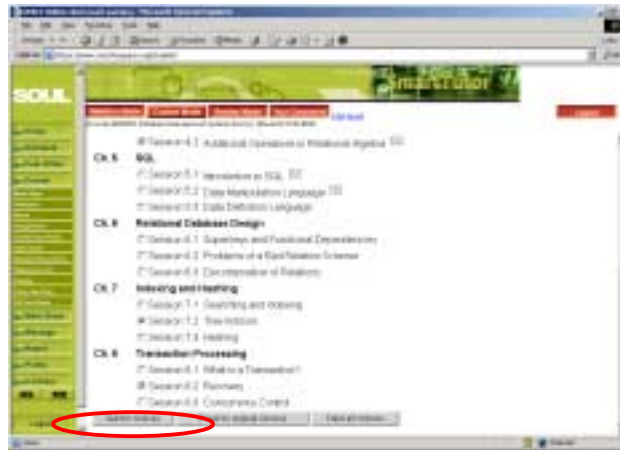
8. The list of contents of the customised learning path is shown.

To edit the customised learning path:

1. On the Customised Learning Path screen, press the **Edit learning path** button.



2. A screen for Modification of Target Learning Session is shown.
3. Make changes on the target learning session(s).
4. Press the **Submit Choices** button to continue. Or press the **Revert to original choices** or **Clear all choices** button to revert the change(s) or clear all selections.



5. Based on the new selection of target learning session(s), an updated learning path is shown.
6. Press the **Confirm learning path** button to continue. Or press the **Back to Selection** button to change the selection of learning session(s).

Learners can start to go through the online course materials in the way same as in Walkthru mode.

5.3 Personalised Learning Path

A pre-test with questions related to the learning topics are provided to learners for assessment. Each pre-test comprises Part I and Part II. Part I is mandatory and consists of a set of multiple-choice questions. For Part II, it is optional and whose questions will be based on the learner's performance in Part I. SmartTutor will analyse the learner's overall performance to create a personalised learning path for him/her.

To generate a personalised learning path:

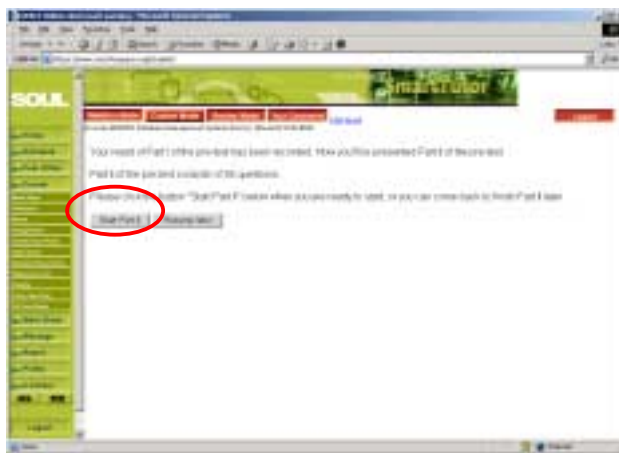
1. On the online course main screen, click on the **Custom Mode** button on the Learning Mode menu.
2. Click on the "**Adaptive learning path**" link.
3. Entry screen for Part I of the pre-test is shown.



4. Press the **Start Part I** button to start the pre-test.
5. List of multiple-choice questions for Part I is shown.
6. Answer the questions and then press the **Submit answers** button.



7. If entry screen for Part II of the pre-test is shown, press the **Start Part II** button to continue with the pre-test. To complete the pre-test later, press the **Resume later** button.



8. List of multiple-choice questions for Part II is shown.



9. Answer the questions and then press the **Submit answers** button.

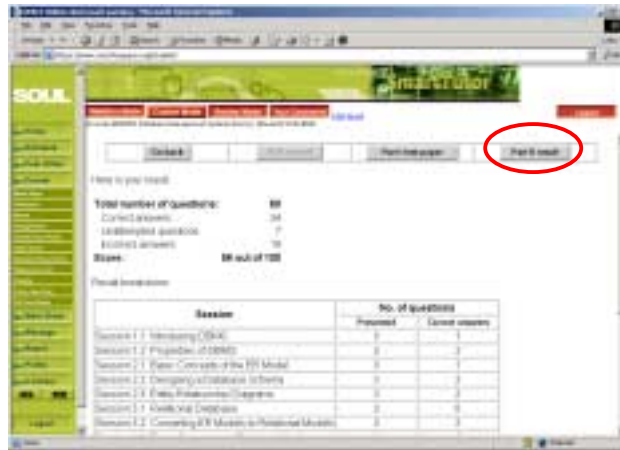
10. The list of contents of the personalised learning path is shown.



On the personalised learning path screen, sessions that are recommended to study are hyperlinked. Those that are not linked are optional.

Learners can also choose to view the pre-test results by pressing the **Review pre-test result** button. The pre-test result of Part I is shown. To view all questions and correct answers in the Part I of the pre-test, press the **Part I test paper** button. For Part II of the pre-test, press the **Past II result** and **Part II test paper** button accordingly.





After reviewing the pre-test, learners can choose to take another pre-test by pressing the **Restart from pre-test** button to re-assess their learning profile.

6. REVIEW MODE

6.1 Introduction

Besides going through the course materials for self-learning, SmartTutor can help learners prepare for examination. In Review Mode, SmartTutor “pinpoints” the sessions in which the learners have not performed well and provides review tests to help them on session revision.

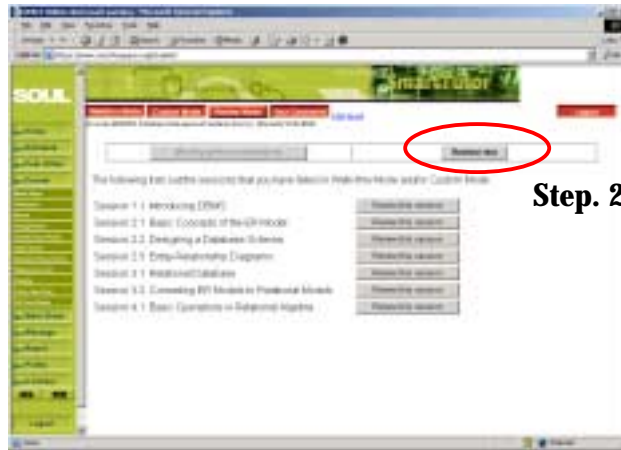
On clicking the **Review Mode** button on the Learning Mode menu, the following screen is shown. If review test(s) was taken before, the weakly performed sessions are listed out.



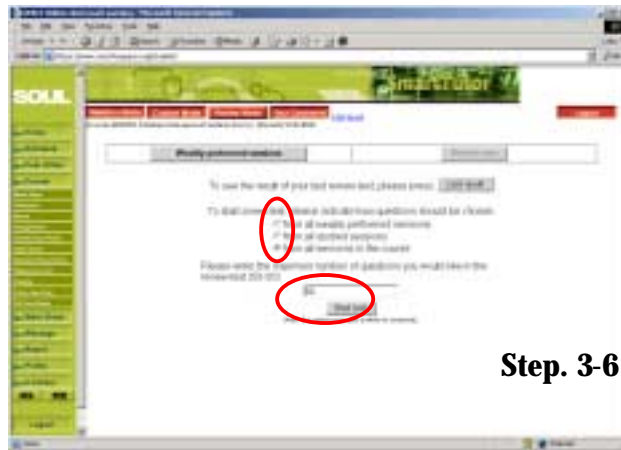
6.2 Review Test

To generate review test:

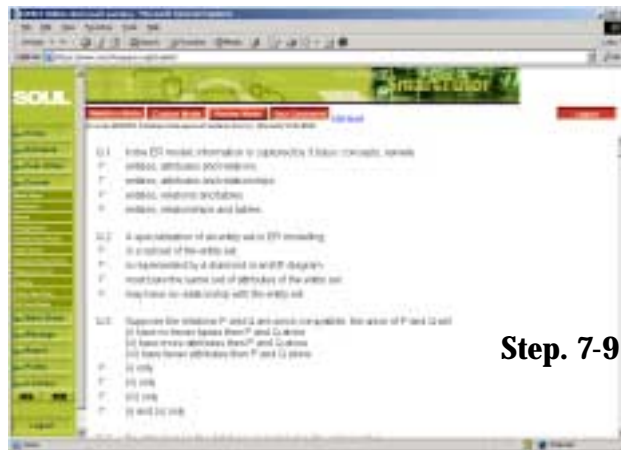
1. On the online course main screen, press the **Review Mode** button on the Learning Mode menu.
2. The Review Mode main screen is shown. Press the **Review test** button.
3. The screen for Review Test Criteria Setting is shown.
4. Select the option for question selection.
5. Enter the maximum number of questions to be included in the review test.
6. Press the **Start test** button to start the test generation.
7. The screen with multiple-choice questions for the review test is shown.
8. Answer the questions by selecting the correct answer.
9. Press the **Submit answers** button at the bottom of the screen.



Step. 2

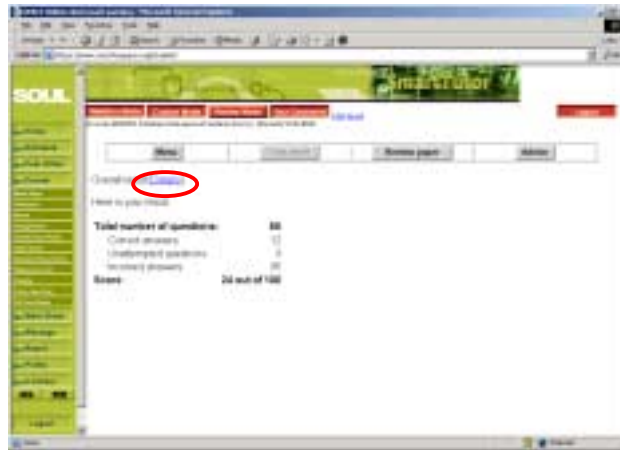


Step. 3-6



Step. 7-9

10. The result of the review test is shown.



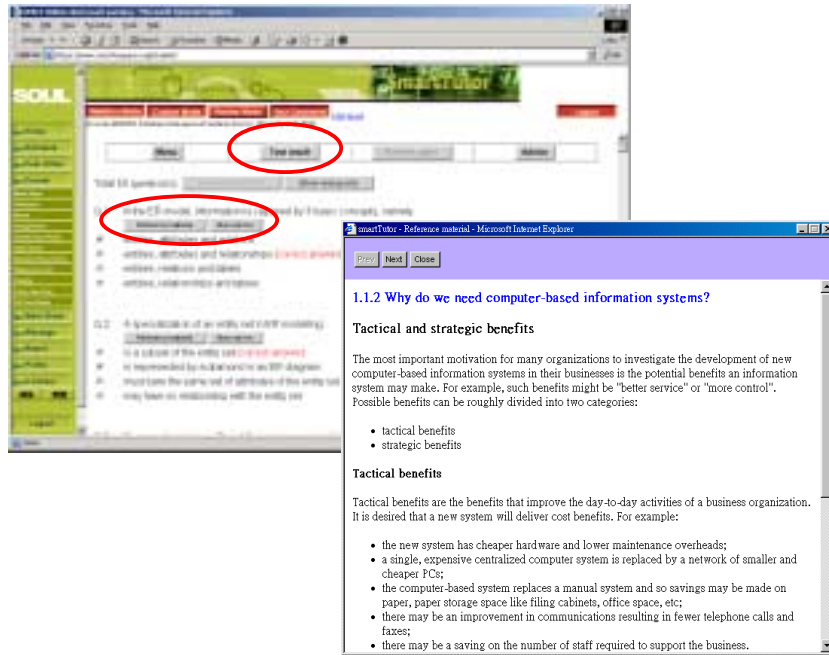
11. To view the details of the performance, click on the “**Details**” link, showing the number of questions from each concept in the review test and how many were correctly answered.

12. To go back to the review test result screen, press the **Menu** button.



To review the test:

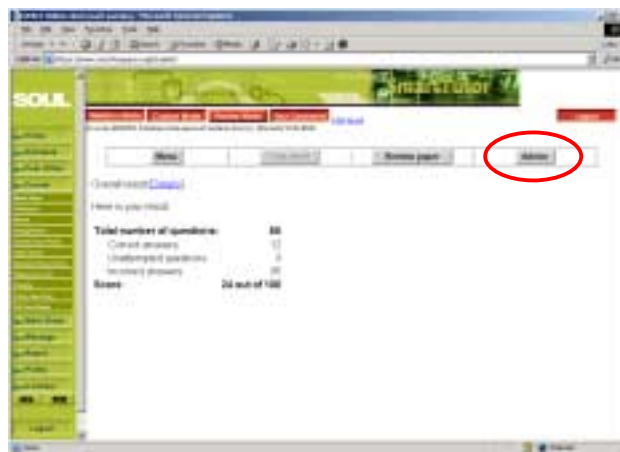
1. On the review test result screen, press the **Review paper** button.
2. The questions and their corresponding correct answer in the review test are shown.



3. To view the incorrectly answered question(s), press the **Show wrong only** button.
4. Incorrectly answered questions are provided with **Reference material** and **More Choices** options to allow learners to view the reference materials (which are shown on a pop-up window) and advice on that questions (explanation of answer, prerequisite of that learning session etc).

To view the overall advice on the course:

1. On the review test result screen, press the **Advice** button.



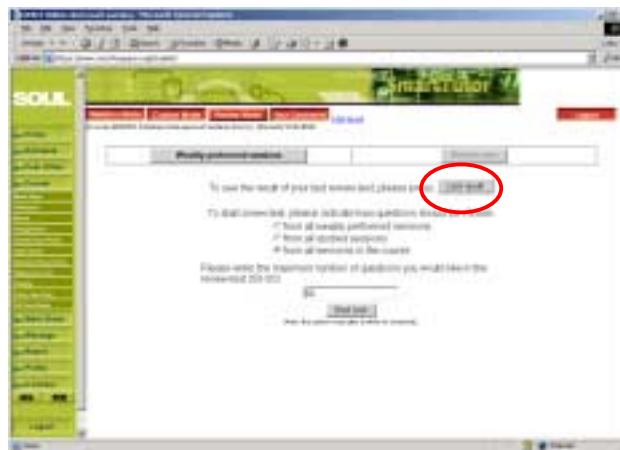
2. Sessions required for improvement are listed and their priorities are also provided. Learners can base on the advice provided to strengthen and improve their less proficient areas.



Note

To view the last test performance

1. On the Review Mode main screen, press the **Review test** button.
2. The screen for Review Test Criteria Setting is shown.
3. Press the **Last result** button.
4. The results of the last review test are shown.



7. FEEDBACK

In order to provide quality learning, an online questionnaire is designed to collect the feedback from learners. Instructors of the courses will review their own course feedback to improve and enhance their courses.

To complete the questionnaire

1. On the online course main screen, press the **Your Comments** button on the top Learning Mode menu.
2. The screen for the questionnaire is shown.
3. Answer the questions.



4. Press the **Submit your opinions** button.

8. CONTACT US

For any inquiries about using SmartTutor, please feel free to contact us via IT Help (by clicking on the Contact Us button on the SOUL Web site at <http://hkuspace.hku.hk>).